

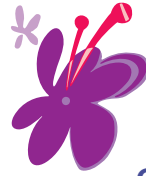
The beauty of Hawaii, the magic of the holidays, a stunning ship renovation, and a Larry Cohen fun cruise extraordinaire add up to a truly once-in-a-lifetime experience.



Larry's annual Holiday Cruise keeps getting better!

Highlights

- Lectures and duplicate games daily
- Private cocktail party
- Holiday celebration
- Gratuities included
- Open bar service and fine wines and spirits throughout the ship
- Free wi-fi in-room and throughout the ship
- Two complimentary evenings at each of two specialty restaurants



Hawaiian Holidays

Roundtrip Los Angeles
on Crystal Cruises 6-Star Serenity

Dec. 21, 2018 - Jan. 6, 2019 (16 days)

from \$7090 per person

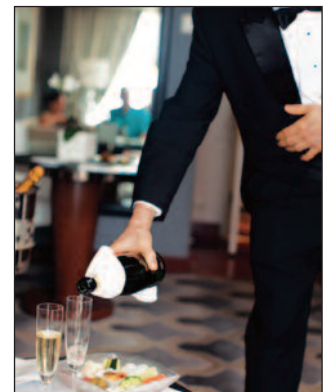


MORE OF WHAT YOU LOVE, only BETTER.

Be one of the first to experience the EVOLUTION of Crystal.

Emerging in November 2018 from her longest-ever makeover, Crystal Serenity will feature more innovative dining options with expanded specialty venues, more state-of-the-art technologies including free, unlimited Wi-Fi, and spacious new suites and penthouses. Replacing existing staterooms, these newly added accommodations will reduce guest capacity to further increase the ships' already generous service and space ratios to be among the loftiest in luxury travel. The number of guests on the Serenity will drop from 1070 to 980.

Culinary inspiration comes in the form of the Waterside (open seating dining), Churrascaria (an open seating Brazilian steakhouse), Chinese-inspired al fresco dining at Silk, and the fresh and friendly new Marketplace. Still onboard: Umi Uma (the new name of Chef Nobu's Japanese-Peruvian venue), and the well-loved Italian specialty restaurant Prego.



Free unlimited wi-fi, available on all devices, offers new SpeedNet accelerators, doubling satellite speed. Rooms will be equipped with ultra-thin 42" interactive TVs offering current movie and TV selections.

Alice Travel



Details at: www.AliceTravel.com • 888-232-6941

You must book through Alice Travel to participate in this bridge program.

Dec 21: Embark Los Angeles, California.

Dec. 22: Catalina Island, California. Just 22 miles off the Southern California coast, 88% of the island’s acreage is protected by the Santa Catalina Island Conservancy. The rugged landscape is a haven for wildlife, hiking, and ziplining. Visit the botanical gardens, or simply find a spot on a bay-facing patio for some refreshments.

Dec. 23 - 26: Cruising the Pacific Ocean.

Dec. 27: Maui/Lahaina, Hawaii. In addition to its marvelous beaches, this second-largest island of the Hawaiian archipelago boasts one of the great natural wonders of the world—Haleakala, the largest dormant volcano on the planet. Maui is made up of a string of jungle valleys flanked on two sides by volcanoes. Lahaina, designated a national historic landmark, was in days gone by one of the principal whaling centers of the Pacific and still brims with reminders of its legendary seafaring past.

Dec. 28: Oahu/Honolulu, Hawaii. Oahu is Hawaii’s great “gathering place”—Asian and American-influenced cultures combine to create a lifestyle where the tropical tempos of Polynesia prevail and the aloha spirit pervades every aspect of the culture. Honolulu and Oahu are the center of island life and boast sandy beaches, endearing smiles and exotic tropical flowers. Nearby are the elegant resorts of Waikiki Beach and, in the distance, majestic Diamond Head. Your choices are many. Relive the historic events of Pearl Harbor, explore tropical rainforests or witness the creation of island culinary magic.

Dec. 29: Kauai/Nawiliwili, Hawaii. Kauai is the “Garden Island.” Fewer people live here than on the larger neighboring islands, but Hawaiian residents and out-of-state visitors alike are attracted to its much-acclaimed beaches. Rugged emerald-colored cliffs set the backdrop for cascading waterfalls and magnificent sandy shores. As one of the most enticing spots on earth, secluded coves are found all along the island’s irregular coastline and a luxuriant rainforest flourishes on the wet side of the island.



Dec. 30: Hawaii/Kailua-Kona, Hawaii. The legendary Kona Coast is famous for its fine weather and inviting beaches and lies at the foot of towering Mauna Loa and Mauna Kea. Here one finds bright, clear days and magnificent sunsets. You won’t want to miss the eerie Volcanoes National Park in contrast to the string of dazzling resorts that have sprung up along the coast. Lush landscapes and gardens have been created over what were once only lava flows. At the center of this transformation is the bustling town of Kailua.

Dec. 31: Hawaii/Hilo, Hawaii. Commanding Hawaii’s eastern Hamakua Coast, Hilo is surrounded by lush forest, resplendently draped in flowers and greenery all year. Perhaps this natural gift is best showcased in Hilo’s huge orchid farms. The western Kona Coast is widely known for its elegant resorts, rocky shore and agreeable dry climate.



Jan 1 - 4: Cruising the Pacific Ocean.

Jan 5: Ensenada, Mexico. The sunny and mild weather helps yield the fine wines considered to be the best in Mexico. The surf in Ensenada boasts several celebrated surfing spots. Migrating gray whales draw their fair share of travelers’ attention as well.

Jan. 6: Disembark Los Angeles, California.

Itineraries subject to change without notice.

Includes bridge program, private events, gratuities, complimentary fine wines and spirits, four nights complimentary dining in specialty restaurants, complimentary wi-fi

Category	PS Penthouse + Verandah	PH Penthouse + Verandah	P1 Deluxe Stateroom + Verandah	P2 Deluxe Stateroom + Verandah	A1 Deluxe Stateroom + Verandah	A2 Deluxe Stateroom + Verandah	B3 Deluxe Stateroom + Verandah	C1 Deluxe Stateroom	C3 Deluxe Stateroom
Group Rate	\$20,500	\$15,390	\$10,525	\$10,385	\$10,240	\$10,105	\$9,575	\$8,110	\$7,090

Prices are per person in U.S. dollars, based on double occupancy, and are subject to change without notice. Call for single supplements. Port security and handling charges: \$736 pp.



Details at: www.AliceTravel.com • 888-232-6941

You must book through Alice Travel to participate in this bridge program.

In the event that Larry Cohen is unable to travel or attend scheduled functions due to illness or circumstances beyond our control, Alice Travel will not be liable, and no refunds for such inability to travel or attend functions and events will be owed by Alice Travel. Applicable cancellation penalties will apply. Alice Travel will attempt to provide a lecturer of equal caliber.